

Courtroom Collection

Judges Bench, Podium, Witness Stand, Counsel Table and Complete Courtroom Suites



Brown Courtroom Suite



Charles-DePaul Courtroom Suite



Grant Courtroom Suite



Roland Courtroom Suite



The Brown Courtroom Collection

The Brown Courtroom Suite makes a bold statement with a design motif achieved through the use of reveals. Ideal for courthouses, the Brown Courtroom Suite pairs well with the Brown Bench for spectator seating.



Judges Bench



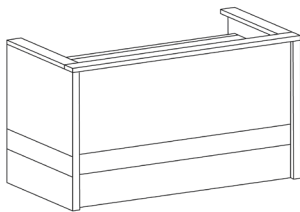
Podium



Witness Stand

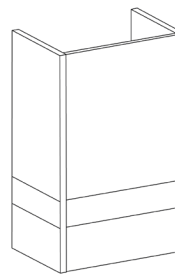


Counsel Table



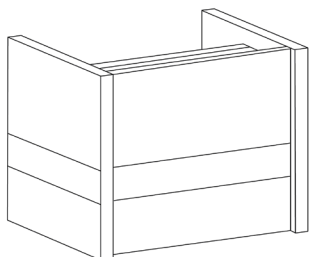
Judges Bench
60-84"W 36"D 42"H
36"H Worksurface

Power Optional



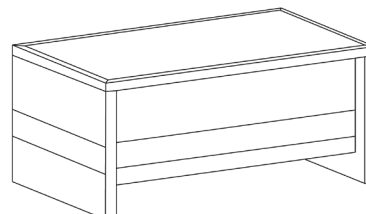
Podium
36"W 24"D 48"H
42"H Worksurface

Power Optional



Witness Stand
38"W 30"D 33"H
30"H Worksurface

Power Optional



Counsel Table
60-84"W 36-42"D 30"H
30"H Worksurface

Power Optional



The Charles-DePaul Courtroom Collection

We merged the best elements from our two most popular transitional styles in the Charles-DePaul courtroom furniture. Charles-DePaul is an all-around favorite among our clients because it offers a lot of usable space, making it an efficient solution for mock courtrooms or smaller spaces. Charles-DePaul is also chosen in courtrooms for coordinating pieces in Charles and DePaul Collections, such as benches, armchairs and tables.



Judges Bench



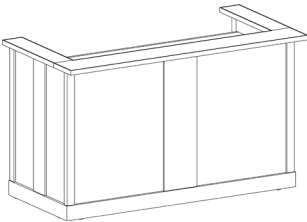
Podium



Witness Stand

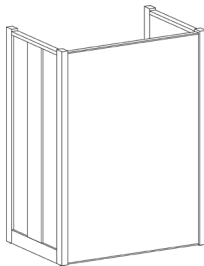


Counsel Table



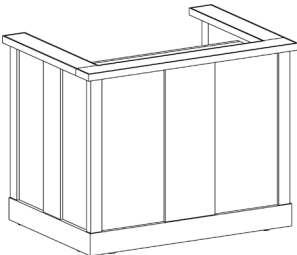
Judges Bench
60-84"W 36"D 42"H
36"H Worksurface

Power Optional



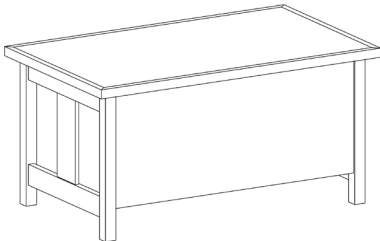
Podium
36"W 24"D 48"H
42"H Worksurface

Power Optional



Witness Stand
38"W 30"D 33"H
30"H Worksurface

Power Optional



Counsel Table
60-84"W 36-42"D 30"H
30"H Worksurface

Power Optional



The Grant Courtroom Collection

The Grant Collection Courtroom Suite delivers the essential courtroom furniture that schools, law offices, and mock courtrooms need at a practical price point. Its cost-effective, panel-based design is constructed from plastic laminate with PVC edge banding for durability. Grant can be specified with casters for flexibility. Caster mount also provides a bumper guard for added protection.



Judges Bench



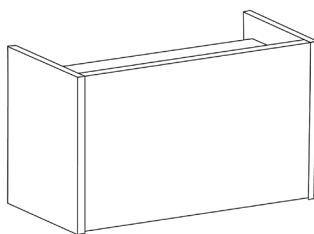
Podium



Witness Stand

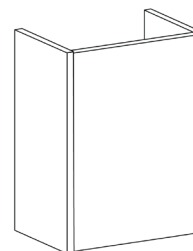


Counsel Table



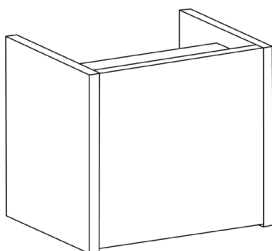
Judges Bench
60-84"W 36"D 42"H
36"H Worksurface

Power Optional
Casters Optional



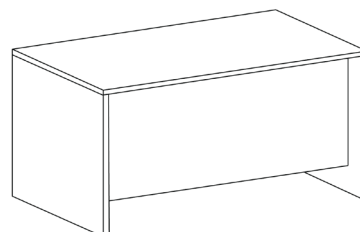
Podium
36"W 24"D 48"H
42"H Worksurface

Power Optional
Casters Optional



Witness Stand
38"W 30"D 33"H
30"H Worksurface

Power Optional
Casters Optional



Counsel Table
60-84"W 36-42"D 30"H
30"H Worksurface

Power Optional
Casters Optional



The Roland Courtroom Collection

The Roland Courtroom Suite maintains a striking presence with its stainless steel bases and stylish, modern design. The metal frame provides both durability and the option to seamlessly add casters to the furniture. With casters, the mobile courtroom furniture can transition the flexible space into a classroom, presentation space, or meeting facility for the community.



Judges Bench



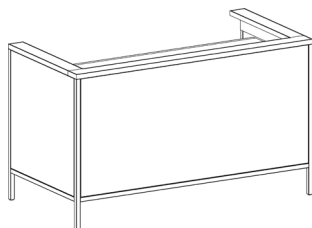
Podium



Witness Stand

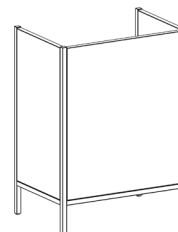


Counsel Table



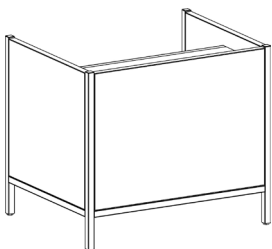
Judges Bench
60-84"W 36"D 42"H
36"H Worksurface

Power Optional



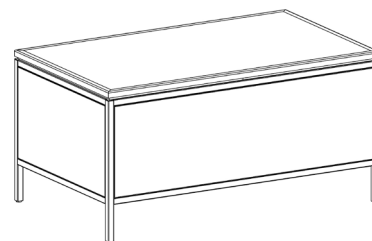
Podium
36"W 24"D 48"H
42"H Worksurface

Power Optional



Witness Stand
38"W 30"D 33"H
30"H Worksurface

Power Optional



Counsel Table
60-84"W 36-42"D 30"H
30"H Worksurface

Power Optional