



## INTERACTIVE FABRIC GUIDE

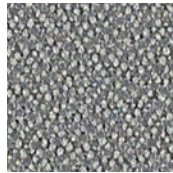
---

**AGATI**

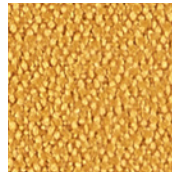
**MAYER  
FABRICS**



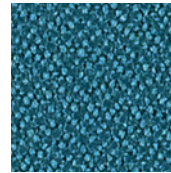
**FOUNDATION10**  
350-030 Mocha



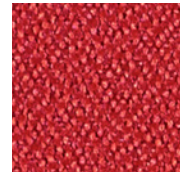
350-016  
**Mercury**



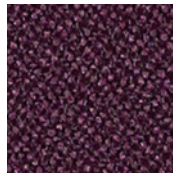
350-032  
**Ochre**



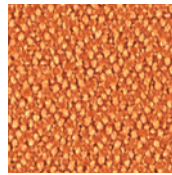
350-044  
**Capri**



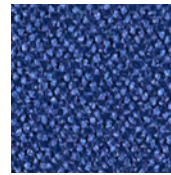
350-041  
**Poppy**



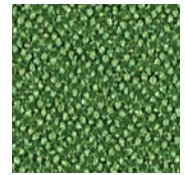
350-008  
**Merlot**



350-049  
**Marmalade**



350-034  
**Parade Blue**



350-103  
**Grass**



**GATSBY**  
WC978-036 Dapper



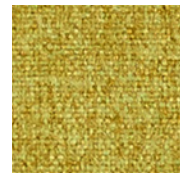
WC978-056  
**Dew**



WC978-002  
**Topaz**



WC978-043  
**Aquamarine**



WC978-013  
**Citron**



WC978-016  
**Charcoal**



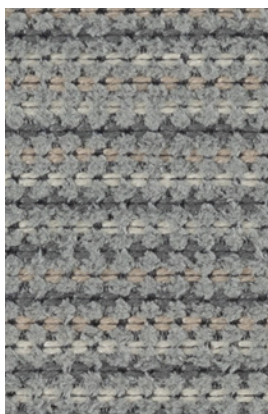
WC978-019  
**Tangelo**



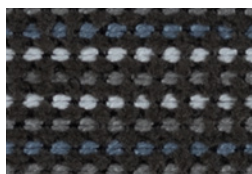
WC978-014  
**Indigo**



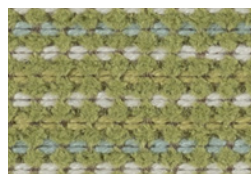
WC978-011  
**Tomato**



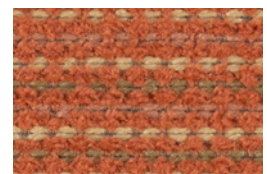
**CASPIAN**  
329-006 Mineral



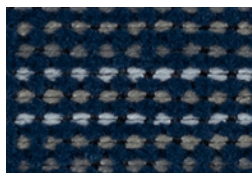
329-016  
**Cinder**



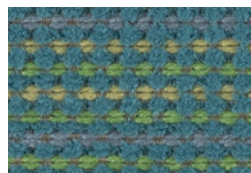
329-003  
**Spring**



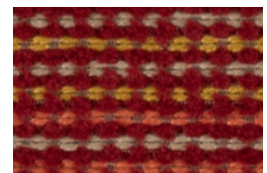
329-009  
**Tangelo**



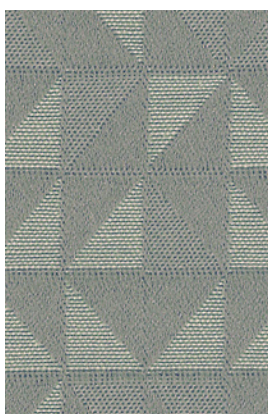
329-004  
**Ink**



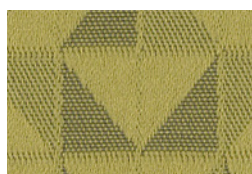
329-013  
**Jungle**



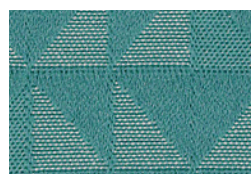
329-011  
**Sunset**



**POLYGON**  
452-016 Smoke



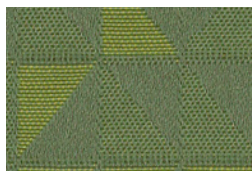
452-002  
**Citron**



452-013  
**Ocean**



452-001  
**Mulberry**



452-003  
**Grass**



452-004  
**Navy**

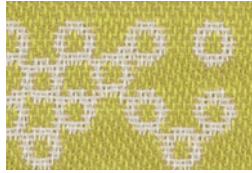


452-006  
**Onyx**

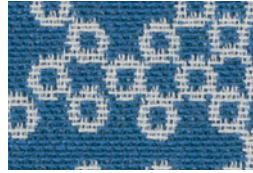
Additional colors are available. Please refer to the Mayer Fabrics website.



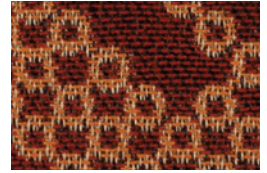
**LOOP**  
637-000 Driftwood



637-003  
**Citron**



637-024  
**Marine**



637-001  
**Tomato**



637-014  
**Ocean**



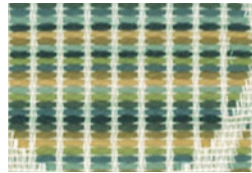
637-044  
**Indigo**



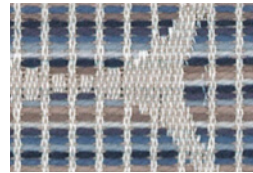
637-016  
**Shadow**



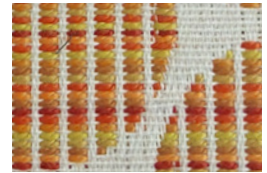
**CENTRIC**  
WC979-006 Shale



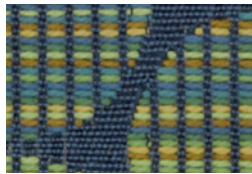
WC979-003  
**Meadow**



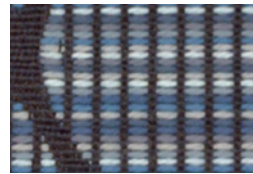
WC979-004  
**Denim**



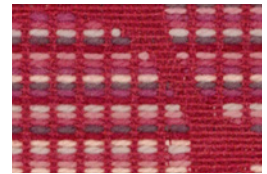
WC979-009  
**Cinnamon**



WC979-013  
**Grotto**



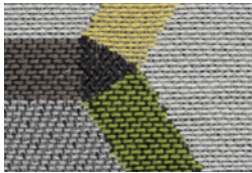
WC979-014  
**Ink**



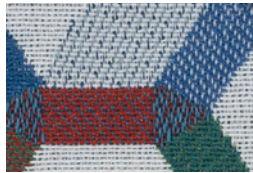
WC979-021  
**Ruby**



**CONNECT\***  
635-007 Latte



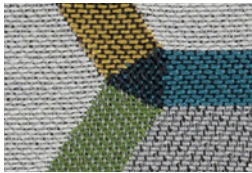
635-003  
**Spring**



635-024  
**Admiral**



635-009  
**Spice**



635-013  
**Meadow**



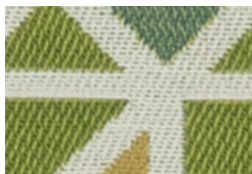
635-005  
**Plum**



635-006  
**Charcoal**



**VERTEX\***  
638-006 Granite



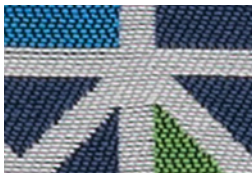
638-003  
**Lime**



638-004  
**Cobalt**



638-009  
**Mango**



638-024  
**Marine**



638-005  
**Plum**

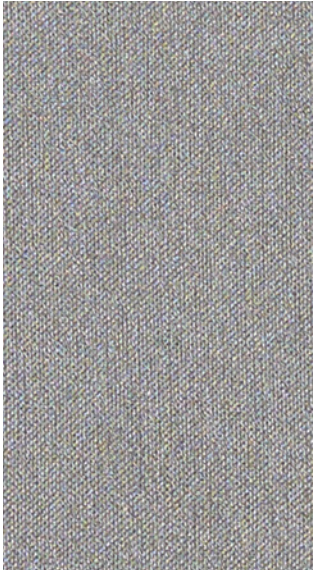


638-001  
**Tomato**

\*contact manufacture for pricing

\*contact manufacture for pricing

Additional colors are available. Please refer to the Mayer Fabrics website.



**SILVERWEAVE**  
SW-026 Zinc



**MATKA**  
MT-067 Pebble



**ETCH**  
EH-016 Charcoal



SW-012  
Daylily



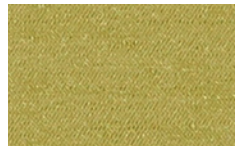
SW-053  
Spring



SW-017  
Doe



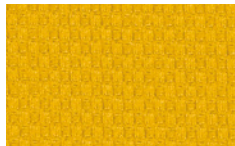
MT-020  
Burnish



MT-013  
Spring



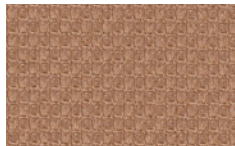
MT-012  
Amber



EH-002  
Marigold



EH-003  
Lime



EH-019  
Penny



SW-039  
Bittersweet



SW-011  
Poppy



SW-005  
Eggplant



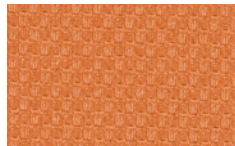
MT-015  
Thistle



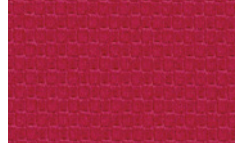
MT-005  
Aubergine



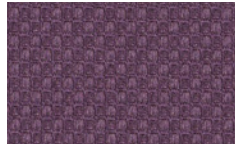
MT-001  
Cherry



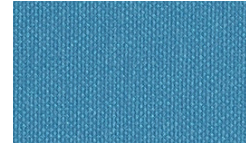
EH-009  
Mango



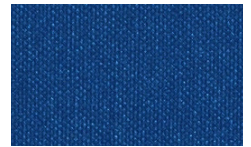
EH-001  
Flame



EH-005  
Grape



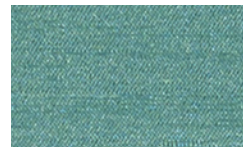
SW-034  
Cyan



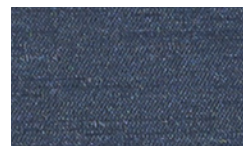
SW-024  
Cobalt



SW-020  
Mica



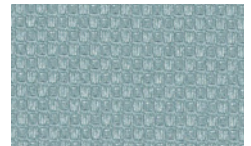
MT-023  
Peacock



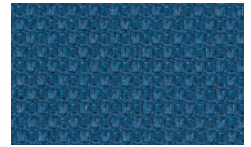
MT-004  
Lapis



MT-006  
Midnight



EH-034  
Crystal



EH-014  
Denim

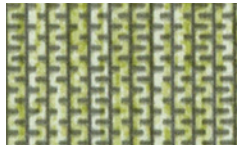


EH-006  
Ebony

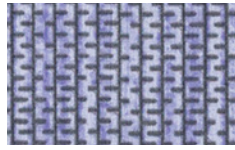
Additional colors are available. Please refer to the Mayer Fabrics website.



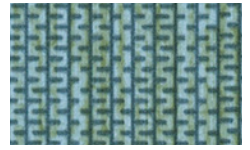
**ZIP**  
ZP-016 Haze



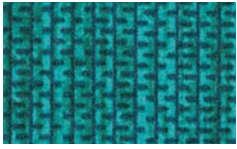
ZP-003  
**Spring**



ZP-005  
**Lavender**



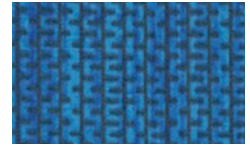
ZP-004  
**Sea**



ZP-013  
**Peacock**



ZP-001  
**Punch**



ZP-034  
**Cobalt**



ZP-023  
**Pine**



ZP-015  
**Aubergine**



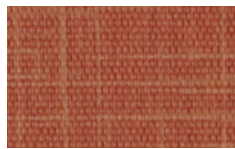
ZP-036  
**Coal**



**SKETCH**  
SC-026 Cobblestone



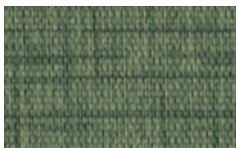
SC-017  
**Flax**



SC-009  
**Tangerine**



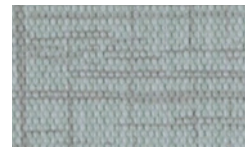
SC-036  
**Glacier**



SC-003  
**Ivy**



SC-001  
**Poppy**



SC-024  
**Mist**



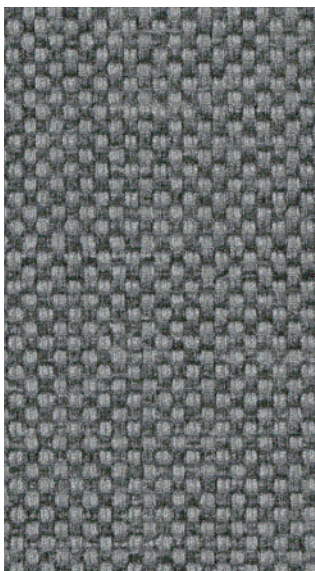
SC-006  
**Charcoal**



SC-005  
**Violet**



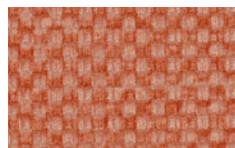
SC-014  
**Royal**



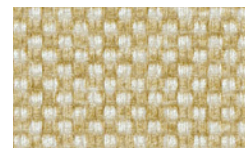
**MODE**  
MO-006 Pewter



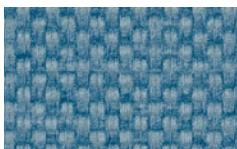
MO-003  
**Celery**



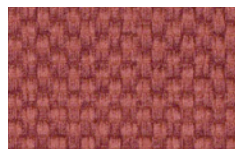
MO-011  
**Paprika**



MO-017  
**Flax**



MO-024  
**Denim**



MO-001  
**Persimmon**



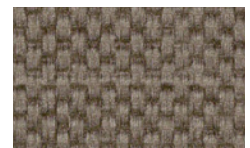
MO-002  
**Straw**



MO-044  
**Spruce**



MO-005  
**Orchid**

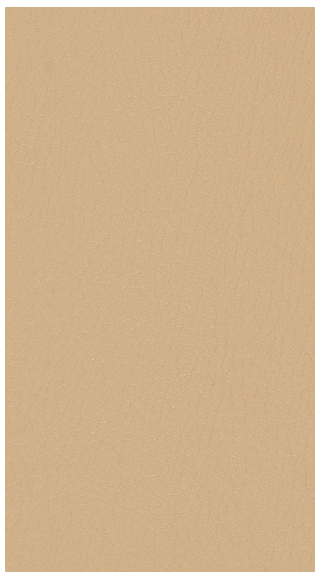


MO-010  
**Mocha**

Additional colors are available. Please refer to the Mayer Fabrics website.



**SPARTAN**  
SN-000 Taupe



**DURANGO**  
DU-007 Natural



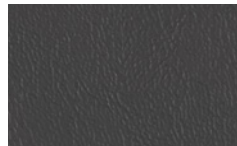
**CARESSA**  
CA-027 Buff



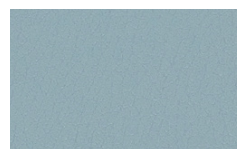
SN-016  
Flint



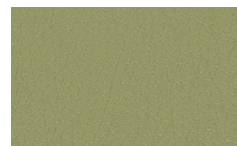
SN-013  
Parsley



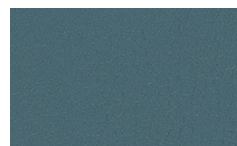
SN-046  
Granite



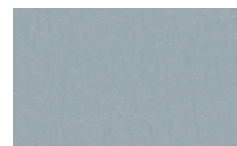
DU-014  
Cyan



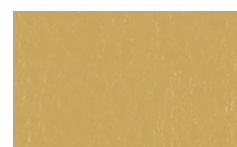
DU-023  
Jade



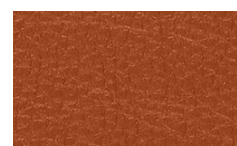
DU-024  
Aegean



CA-066  
Zinc



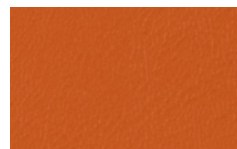
CA-042  
Butter



CA-019  
Bittersweet



SN-020  
Caramel



SN-009  
Tangerine



SN-001  
Lipstick



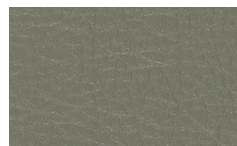
DU-019  
Sepia



DU-009  
Tangelo



DU-001  
Paprika



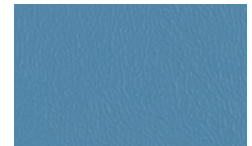
CA-053  
Laurel



CA-029  
Ochre



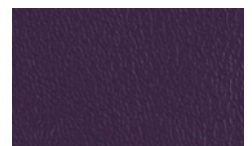
CA-001  
Ruby



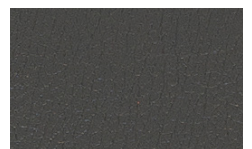
SN-014  
Caribbean



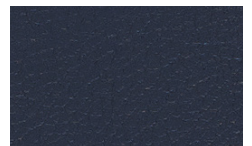
SN-044  
Deep Sea



SN-008  
Grape



DU-016  
Char



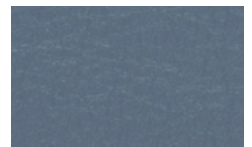
DU-004  
Sapphire



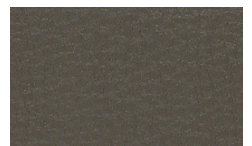
DU-006  
Black



CA-123  
Parsley



CA-064  
Cerulean



CA-026  
Granite

Additional colors are available. Please refer to the Mayer Fabrics website.

# TECHNICAL INFORMATION

## Fabric Guide | Interactive Card

Pattern 54"	Content and Backing	Certifications	Weight/ Linear Yd.	Pattern Repeat	Finish	Abrasion Wyzenbeek	Light- Fastness	Flammability	Cleaning Code
<b>CARESSA</b>	80% Vinyl - Phthalate Free face, 20% Polyester backing	GREENGUARD	29 oz.	None	Soil & Stain Resistant Top Coat with Ink Resistant Technology	650,000 <sup>^</sup> Double Rubs	1000 hours	Cal. 117-2013 NFPA 260/UFAC Class 1 FMVSS 302	BC, CFC
<b>CASPIAN</b> <i>Directional</i>	76% Polyester, 24% SEAQUAL® YARN (Post-Consumer Recycled Polyester) Backing: Acrylic	GREENGUARD Gold	17.89 oz.	.125" H, 2.5" V	Stain Repellent - PFAS Free	80,000 <sup>^</sup> Double Rubs	40 hours	Cal. 117-2013 NFPA 260/UFAC Class 1	WS, BC
<b>CENTRIC</b> <i>Directional</i>	81% Polyester, 19% Post- Consumer Recycled Polyester Backing: Crypton®	GREENGUARD Gold	23.216 oz.	2.5" H, 1.375" V	Crypton® with Antimicrobial Silver Ion Technology	102,000 <sup>^</sup> Double Rubs	40 hours	Cal. 117-2013 NFPA 260/UFAC Class 1	W, C, BC
<b>CONNECT</b> <i>Directional</i>	100% Post-Consumer Recycled Polyester Backing: Acrylic	GREENGUARD Gold	18.848 oz.	7.25" H, 10.75" V	Stain Repellent - PFAS Free	100,000 <sup>^</sup> Double Rubs	40 hours	Cal. 117-2013 NFPA 260/UFAC Class 1	WS, BC
<b>DURANGO™</b>	78% Vinyl - Phthalate Free face, 22% Polyester backing	GREENGUARD	30 oz.	None	Soil & Stain Resistant Top Coat with Ink Resistant Technology	1,000,000 <sup>^</sup> Double Rubs	200 hours	Cal. 117-2013 NFPA 260/UFAC Class 1	BC, CFC
<b>ETCH</b> <i>Directional</i>	78% Vinyl - Phthalate Free face, 22% Polyester backing	GREENGUARD	30 oz.	None	Soil & Stain Resistant Top Coat with Ink Resistant Technology	100,000 <sup>^</sup> Double Rubs	300 hours	Cal. 117-2013 NFPA 260/UFAC Class 1 FMVSS 302	BC, CFC
<b>FOUNDATION10</b> <i>Multi-use*</i>	100% Recycled Polyester (65% Pre-/35% Post-Consumer) Backing: None	GREENGUARD Gold	13 oz.	None	Stain Repellent - PFOA & PFOS Free	1,000,000 <sup>^</sup> Double Rubs	40 hours	Cal. 117-2013 NFPA 260/UFAC Class 1 ASTM E84 (Unadhered) Class 1 or A	WS
<b>GATSBY</b> <i>Directional</i>	100% Polyester Backing: Crypton®	GREENGUARD Gold	24.3 oz.	None	Crypton® with Anti- microbial Silver Ion Technology	100,000 <sup>^</sup> Double Rubs	40 hours	Cal. 117-2013 NFPA 260/UFAC Class 1	C, BC
<b>LOOP</b> <i>Directional</i>	100% Post-Consumer Recycled Polyester Backing: Acrylic	GREENGUARD Gold	13.488 oz.	14.5" H, 7.375" V	Stain Repellent - PFAS Free	80,000 <sup>^</sup> Double Rubs	40 hours	Cal. 117-2013 NFPA 260/UFAC Class 1	WS, BC
<b>MATKA</b> <i>Directional</i>	80% Vinyl - Phthalate Free face, 20% Polyester backing	GREENGUARD	30 oz.	Non- Matching	Soil & Stain Resistant Top Coat with Ink Resistant Technology	250,000 <sup>^</sup> Double Rubs	500 hours	Cal. 117-2013 NFPA 260/UFAC Class 1	WS, BC, CFC
<b>MODE</b> <i>Directional</i>	81% Vinyl - Phthalate Free face, 19% Polyester backing	GREENGUARD	30 oz.	Non- Matching	Soil & Stain Resistant Top Coat	100,000 <sup>^</sup> Double Rubs	1000 hours	Cal. 117-2013 NFPA 260/UFAC Class 1	BC, CFC
<b>POLYGON</b> <i>Directional</i>	60% Post-Consumer Recycled Polyester, 40% Rayon Backing: Acrylic	GREENGUARD Gold	13 oz.	3.5" H, 4.5" V	GreenShield - PFOA & PFOS Free	100,000 <sup>^</sup> Dou- ble Rubs	40 hours	Cal. 117-2013 NFPA 260/UFAC Class 1	WS
<b>SILVERWEAVE</b> <i>Directional</i>	81% Vinyl face, 19% Hi-Loft Polyester backing	GREENGUARD	30 oz.	None	Soil & Stain Resistant Top Coat	930,000 <sup>^</sup> Double Rubs	1000 hours	Cal. 117-2013 NFPA 260/UFAC Class 1	BC, CFC
<b>SKETCH</b> <i>Directional</i>	65% Vinyl - Phthalate Free face, 35% Polyester backing	GREENGUARD	32 oz.	Non- Matching	Soil & Stain Resistant Top Coat with Ink Resistant Technology	1,150,000 <sup>^</sup> Double Rubs	500 hours	Cal. 117-2013 NFPA 260/UFAC Class 1 FMVSS 302	WS, BC, CFC
<b>SPARTAN</b> <i>Indoor/Outdoor</i>	80% Vinyl - Phthalate Free face, 20% Polyester backing	GREENGUARD	32 oz.	None	Soil & Stain Resistant Top Coat	175,000 <sup>^</sup> Double Rubs	1000 hours	Cal. 117-2013 NFPA 260/UFAC Class 1 FMVSS 302	WS, BC, CFC
<b>VERTEX</b> <i>Directional</i>	100% Post-Consumer Recycled Polyester Backing: Acrylic	GREENGUARD Gold	21.616 oz.	14.625" H, 34" V	Stain Repellent - PFAS Free	100,000 <sup>^</sup> Double Rubs	40 hours	Cal. 117-2013 NFPA 260/UFAC Class 1	WS, BC
<b>ZIP</b> <i>Directional</i>	78% Vinyl - Phthalate Free face, 22% Polyester backing	GREENGUARD	26 oz.	None	Soil & Stain Resistant Top Coat	100,000 <sup>^</sup> Double Rubs	1000 hours	Cal. 117-2013 NFPA 260/UFAC Class 1	BC, CFC

### REDUCED ENVIRONMENTAL IMPACT

These products are GREENGUARD Certified or GREENGUARD Gold Certified for low chemical and particle emissions to UL standard UL 2818 and may contribute to LEED certification.

### CARE AND CLEANING INFORMATION

W: Water-Based Cleaner      WS: Water/Solvent Cleaner

C: Crypton Cleaning      CFC: Coated Fabrics Cleaning – Refer to Mayer website for complete cleaning info.

BC: Bleach Cleanable – 1 part bleach, 9 parts water = 10% bleach, 90% water solution. **Do not clean/disinfect fabric for longer than 10 minutes using the 10% bleach solution. Always rinse promptly with clean water after applying the bleach solution. Failure to do so will void any and all warranties.**

### DYE TRANSFER DISCLAIMER

Certain clothing and accessory dyes (such as those used on denim jeans) may migrate to lighter colors. This phenomenon is increased by humidity and temperature and is irreversible. Mayer Fabrics will not assume responsibility for dye transfer caused by external contaminants. Please check compatibility when using this product in combination with painted or varnished surfaces.

### ADDITIONAL INFORMATION

<sup>^</sup>Abrasion test results exceeding ACT Performance Guidelines are not an indicator of product lifespan. Multiple factors affect fabric durability and appearance retention.

\*A multi-use fabric that can be used for upholstery, panels, wrapped walls, and acoustic.

Warranty: Please refer to the Mayer website for warranty information by pattern.

Custom Colors: All patterns can be custom colored. Minimum yardage applies.

Digital Swatch Card Color Matching: Due to color variations on different monitors and color printers, actual swatch colors may vary slightly. Please request a memo

sample from Mayer Fabrics to ensure proper color representation.

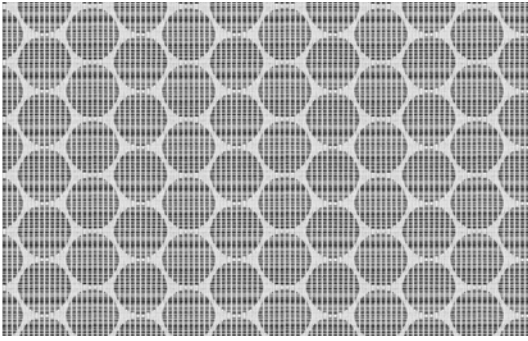
Complete and current product information available at [mayerfabrics.com](http://mayerfabrics.com).



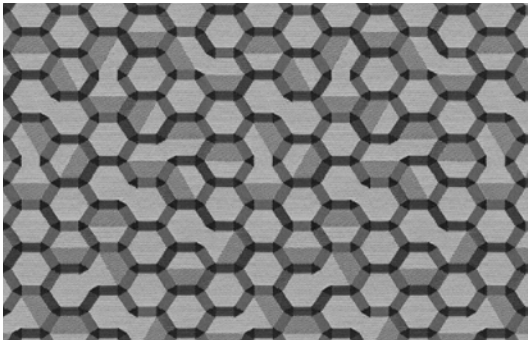
These fabrics meet or exceed these ACT performance guidelines.  
\*Certification Marks owned by ACT®

©2023  
AFGCD MF0823

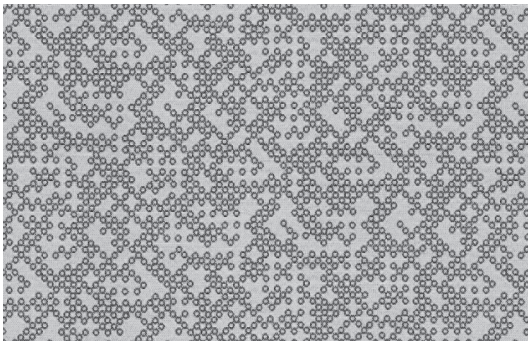
# MAYER FABRICS



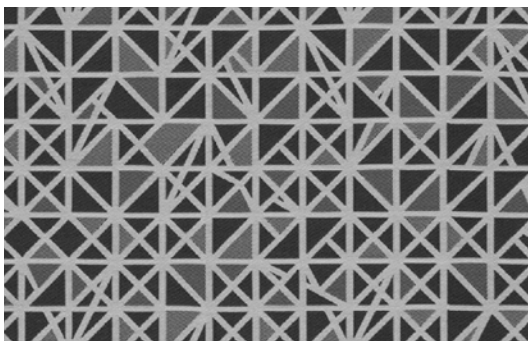
CENTRIC



CONNECT



LOOP



VERTEX



# AGATI

T 312.829.1977      www.agati.com  
451 North Claremont, Chicago, IL 60612

# MAYERFABRICS

T 800.428.4415      mayerfabrics.com  
500 S. Kitley Ave. Indianapolis, IN 46219