

Camira Collection



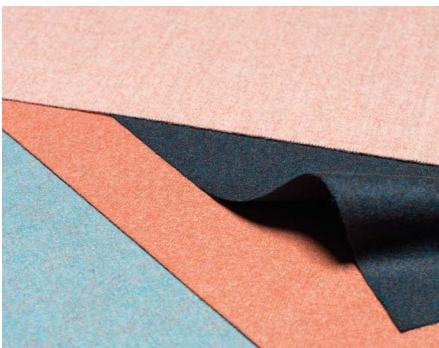
camira
www.camirafabrics.com

AGATI
FURNITURE

Fabrics for spaces and places

With roots dating to 1783, we've had a belief that you "only ever get out what you put in," which is why so much of who we are goes into what we make. We put our heart and soul into making fabrics, but with a real sense of responsibility for the bigger picture from the raw materials we use to the manufacturing processes, and with the involvement of many different people from start to finish.

Sustainability looms large in our thinking. It goes to the core of who we are, what we do and the legacy we leave behind. It's reflected in the products we design, the materials we use and the time-honed skills which go into making yarn and fabric.



camira

Blazer

[View full range here](#)



Magdalene CUZ21



Wellington CUZ13



Edge Hill CUZ90



Goldsmith CUZ39



Wesley CUZ82



Dunhurst CUZ58



Cardiff CUZ1N



Abertay CUZ3B



Vassar CUZ2U



Montcrest CUZ3A



Camphill CUZ1K



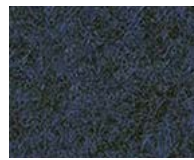
Bryanston CUZ53



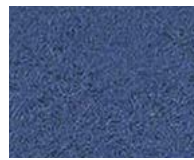
Glenalmond CUZ62



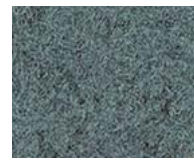
Edinburgh CUZ1Y



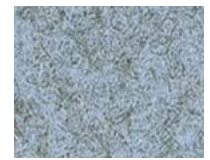
Newcastle CUZ1W



Manchester CUZ1V



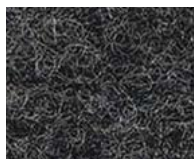
Latymer CUZ33



Plymouth CUZ1R



Napier CUZ08



Silcoates CUZ30



Trevelyan CUZ31



St Andrews CUZ86



Silverdale CUZ28



Dartmouth CUZ2Q

Blazer Lite

[View full range here](#)



Verity LTH57



Devoted LTH58



Aspire LTH52



Worship LTH59



Buddah LTH56



Bliss LTH48



Faith LTH68



Mood LTH44



Wish LTH67



Balance LTH41



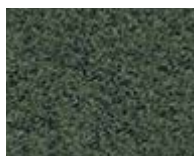
Dainty LTH64



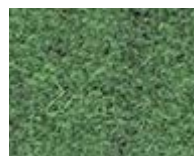
Pillow LTH43



Haven LTH40



Shelter LTH60



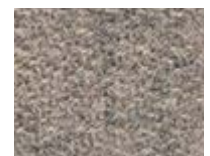
Graceful LTH51



Cuddle LTH62



Retreat LTH39



Daydream LTH46

Photographic fabric scans are not color accurate. Always request actual fabric samples before ordering.

Era

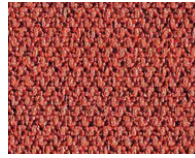
[View full range here](#)



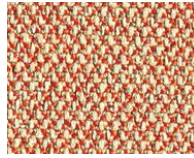
Prime CSE09



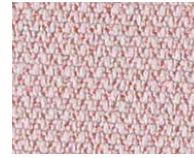
Extent CSE28



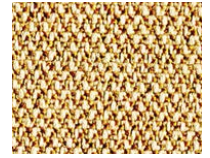
Experience CSE29



Sequence CSE25



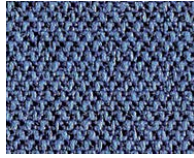
Calendar CSE19



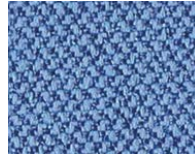
Splitsecond CSE31



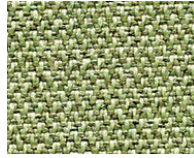
Stage CSE15



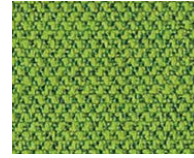
Range CSE42



Chapter CSE08



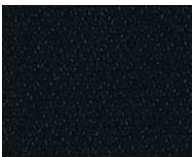
Endurance CSE34



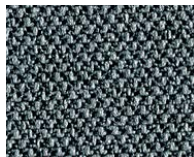
Timelapse CSE16



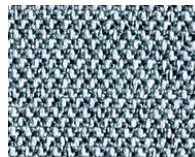
Lifetime CSE03



Forward CSE14



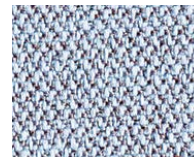
Elapse CSE44



Late CSE43



Generation CSE02



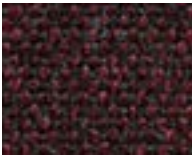
Youth CSE39



Aeon CSE20

Main Line Flax

[View full range here](#)



Northfields MLF40



Blackwall MLF46



Barking MLF45



Kilburn MLF06



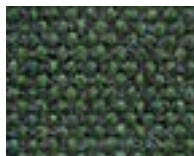
Alperton MLF43



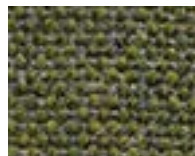
Tooting MLF17



Hornchurch MLF55



Greenford MLF32



Moorgate MLF57



Harrow MLF54



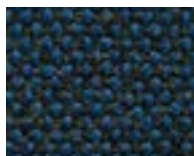
Woodford MLF67



Bayswater MLF24



Tower MLF36



Victoria MLF19



Clapham MLF49



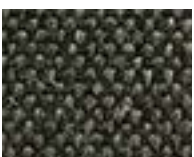
Epping MLF51



Westminster MLF22



Waterloo MLF21



Temple MLF16



Richmond MLF62



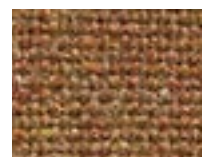
Shadwell MLF63



Redbridge MLF61



Upminster MLF20



Perivale MLF59

Photographic fabric scans are not color accurate. Always request actual fabric samples before ordering.

Silk

[View full range here](#)



Emperor SLK16



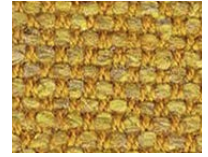
Oriental SLK12



Empress SLK05



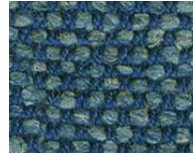
Sahara SLK01



Arabia SLK02



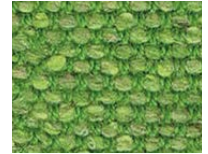
Pamir SLK14



Monarch SLK15



Brunei SLK08



Incense SLK06



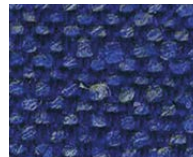
Kingdom SLK10



Imeon SLK20



Chancellor SLK19



Dynasty SLK17



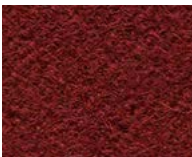
Parthian SLK09



Divine SLK13

Synergy

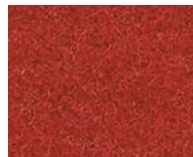
[View full range here](#)



Amiable LDS79



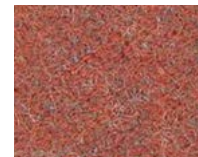
Combo LDS77



Mutual LDS84



Contribution LDS75



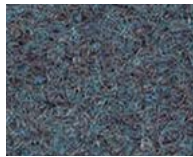
Work LDS73



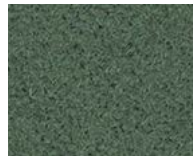
Affinity LDS74



Couple LDS41



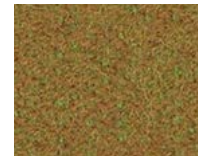
Family LDS58



Append LDS49



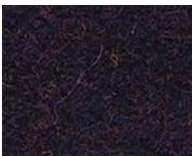
Interfuse LDS48



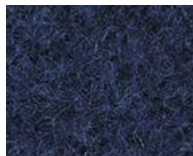
Marry LDS43



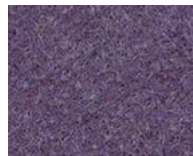
Summon LDS45



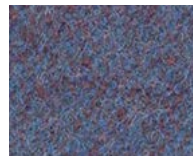
Assemble LDS61



Alike LDS62



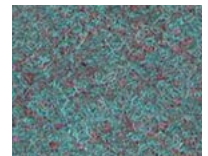
Warmth LDS67



Order LDS64



Huddle LDS65



Kinship LDS56



Mix LDS17



Collective LDS39



Linea LDS37



Pair LDS31



Affix LDS32



Serendipity LDS08

Photographic fabric scans are not color accurate. Always request actual fabric samples before ordering.

Blazer



Application	Upholstery/Panel
Composition	100% Pure New Wool
Environment	Certified to Indoor Advantage Gold
Width	54 inches minimum
Weight	13 ^{1/2} oz/sq yd ±5%
Abrasion	Independently certified to ≥75,000 double rubs. Covered by a full and comprehensive 10 year guarantee.
Flammability	California Technical Bulletin 117 NFPA 260 + UFAC Class 1 BS 7176 Low Hazard ASTM E84 Class 1 or A (Adhered) ASTM E84 Class 1 or A (Un-adhered) IMO FTP Code (Part 8)

Era



Application	Upholstery/Panel
Composition	100% Polyester
Environment	Certified to OEKO-TEX® Standard 100 Certified to Indoor Advantage Gold
Width	54 inches minimum
Weight	9 ^{1/2} oz/sq yd ±5%
Abrasion	Independently certified to ≥100,000 double rubs. Covered by a full and comprehensive 10 year guarantee.
Flammability	California Technical Bulletin 117 NFPA 260 + UFAC Class 1 BS 7176 Low Hazard ASTM E84 Class 1 or A (Adhered) ASTM E84 Class 1 or A (Un-adhered) UL 723

Silk



Application	Upholstery/Panel
Composition	70% Pure New Wool, 19% Flax, 11% Silk
Environment	Certified to Indoor Advantage Gold
Width	54 inches minimum
Weight	14 ^{1/2} oz/sq yd ±5%
Abrasion	Independently certified to ≥100,000 double rubs. Covered by a full and comprehensive 10 year guarantee.
Flammability	California Technical Bulletin 117 NFPA 260 + UFAC Class 1 BS 7176 Medium Hazard ASTM E84 Class 2 or B (Adhered) ASTM E84 Class 2 or B (Un-adhered) IMO FTP Code (Part 8)

Blazer Lite



Application	Panel
Composition	100% Pure New Wool
Environment	Certified to Indoor Advantage Gold
Width	66 inches minimum
Weight	10 ^{1/2} oz/sq yd ±5%
Flammability	California Technical Bulletin 117 NFPA 260 + UFAC Class 1, ASTM E84 Class 1 or A (Adhered), ASTM E84 Class 2 or B (Un-adhered) Please specify when ordering: ASTM E84 Class 1 or A (Un-adhered) with Light Acrylic Backing NFPA 701 when FR treated

Main Line Flax



Application	Upholstery/Panel
Composition	75% Pure New Wool, 25% Flax
Environment	Certified to the EU Ecolabel Certified to Indoor Advantage Gold
Width	54 inches minimum
Weight	13 oz/sq yd ±5%
Abrasion	Independently certified to ≥100,000 double rubs. Covered by a full and comprehensive 10 year guarantee.
Flammability	California Technical Bulletin 117 NFPA 260 + UFAC Class 1 BS 7176 Medium Hazard ASTM E84 Class 1 or A (Adhered) ASTM E84 Class 2 or B (Un-adhered) IMO FTP Code (Part 8)

Synergy



Application	Upholstery/Panel
Composition	95% Pure New Wool, 5% Nylon
Environment	Certified to the EU Ecolabel Certified to Indoor Advantage Gold
Width	54 inches minimum
Weight	11 ^{3/4} oz/sq yd ±5%
Abrasion	Independently certified to ≥100,000 double rubs. Covered by a full and comprehensive 10 year guarantee.
Flammability	California Technical Bulletin 117 NFPA 260 + UFAC Class 1 BS 7176 Low Hazard ASTM E84 Class 2 or B (Adhered) ASTM E84 Class 2 or B (Un-adhered) IMO FTP Code (Part 8) Please specify when ordering: ASTM E84 Class 1 or A (Adhered) when FR treated NFPA 701 when FR treated
