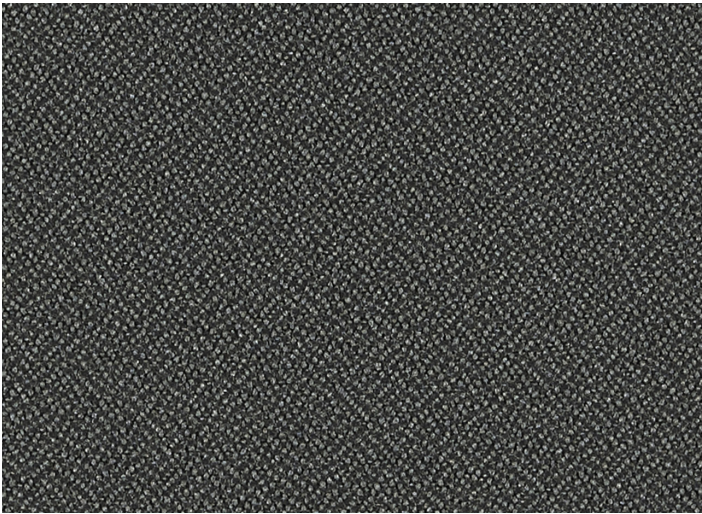


POD QUICK SHIP FABRIC CARD

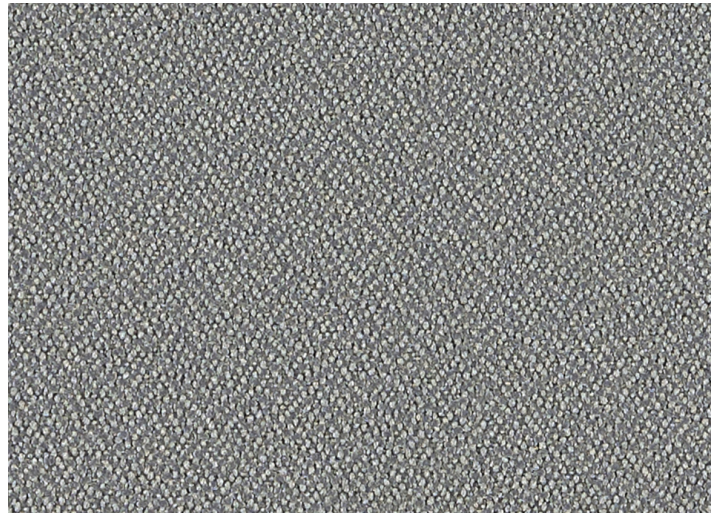
AGATI
FURNITURE

Foundation 10 - Woven Fabric

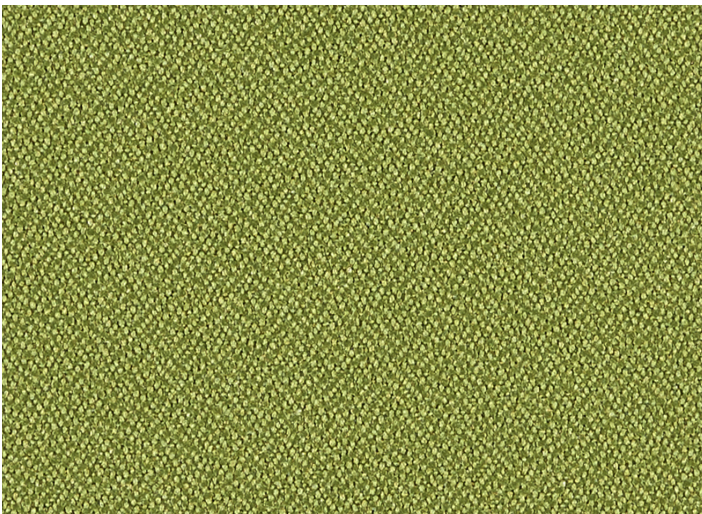
Colors



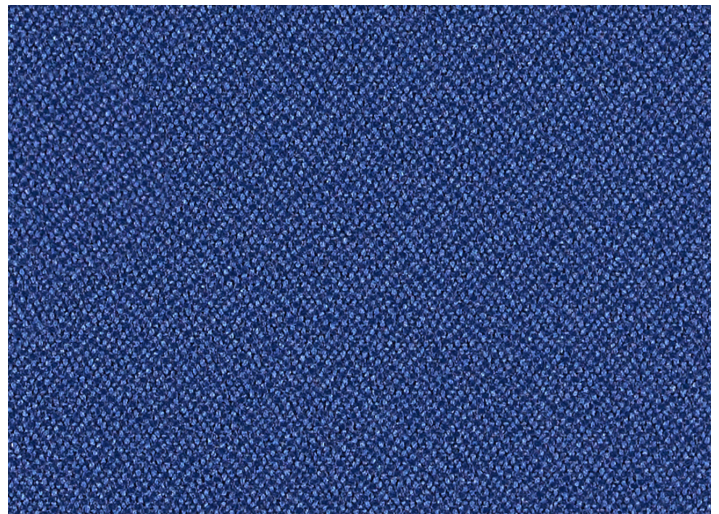
Graphite



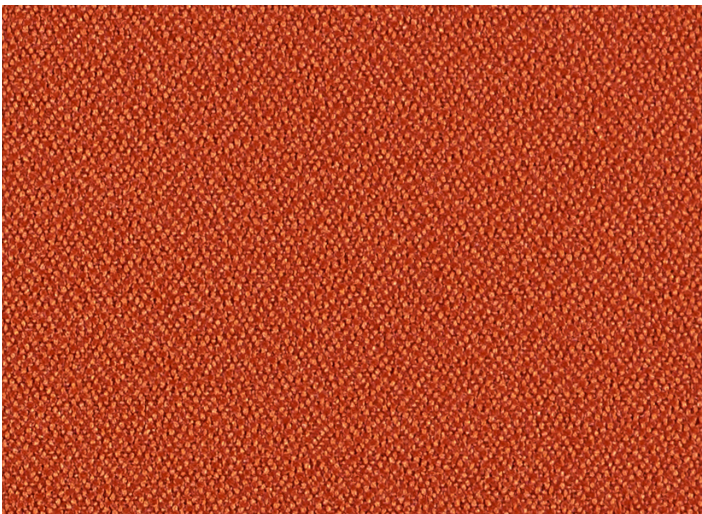
Mercury



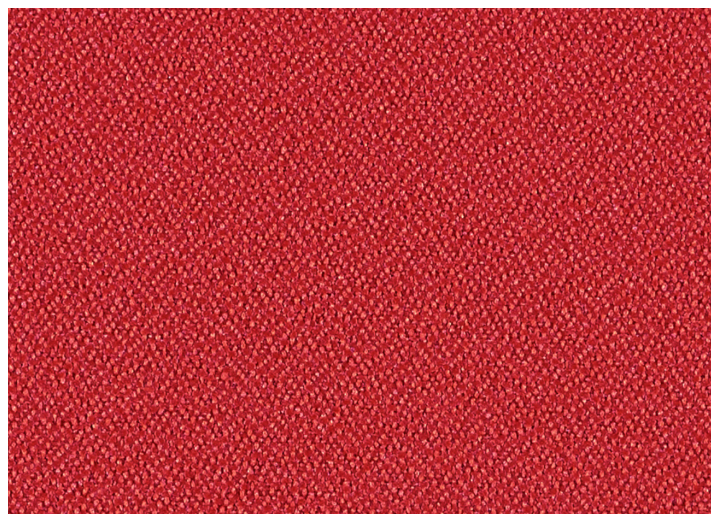
Green Apple



Parade Blue



Tangelo



Poppy

Foundation 10

Specs and Cleaning

Category: Upholstery

Content: 100% Recycled Polyester (65% Pre-/35% Post-Consumer)

Backing: None

Finish: Stain Repellent

Shown Railroaded: NO

Directional: NO

Breaking Strength: Warp 325/Fill 275

Seam Strength: Warp: 55/Fill: 52

Abrasion Resistance: Passes 1,000,000 Double Rubs (Wyzenbeek)

Pilling Resistance: Class 4

Colorfastness to Crocking: Dry: Class 4 min/Wet: Class 4

Colorfastness to Light: 40 hours

Application: Indoor

Flammability: Passes Cal TB 117-2013; NFPA 260/UFAC Class 1; ASTM E84 Class 1 or A

Cleaning Code: WS: Water/Solvent Cleaner

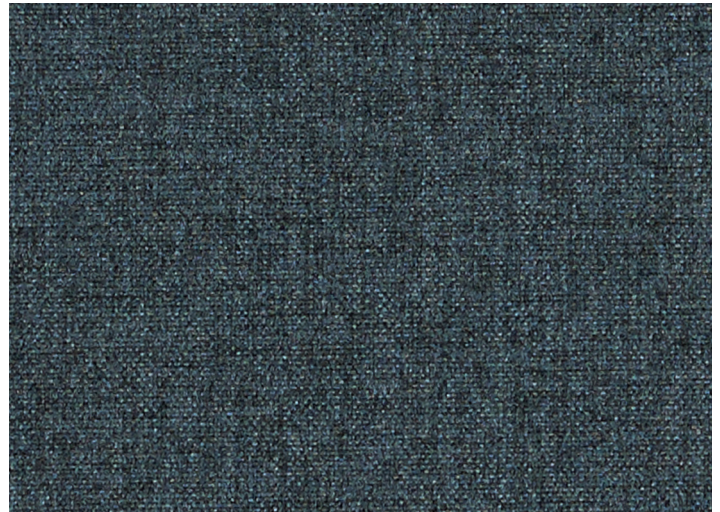
Spot clean with a mild solvent, an upholstery shampoo, or the foam from a mild detergent. When using a solvent or dry cleaning product, follow instructions carefully and clean only in a well-ventilated room. Avoid any product that contains carbon tetrachloride or other toxic materials. With either method, pretest a small area before proceeding. Always rinse promptly with clean water. Please note: If specific cleaners are not listed, then the pattern has not been tested for cleaning solution compatibility.

Fedora - Woven Fabric

Colors



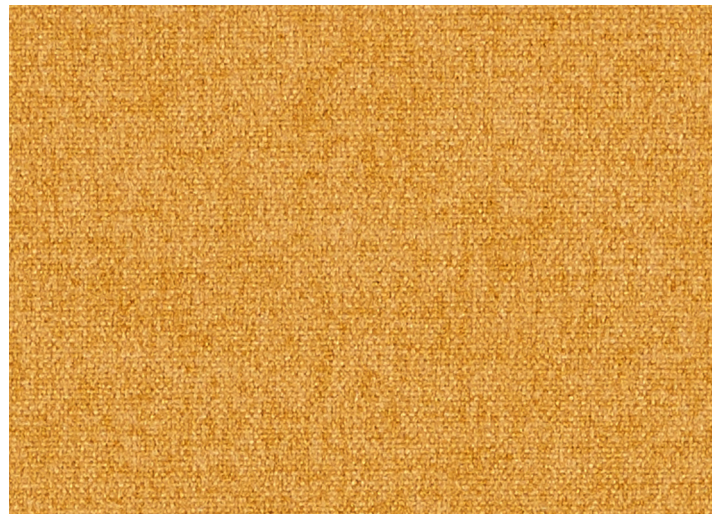
Bitumen



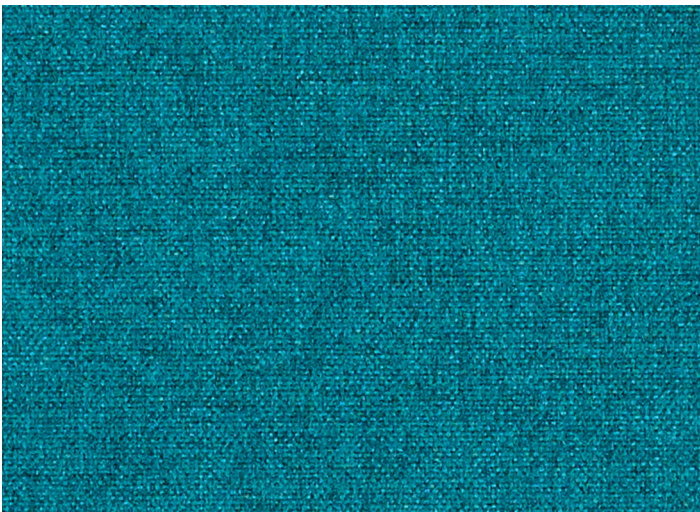
Midnight



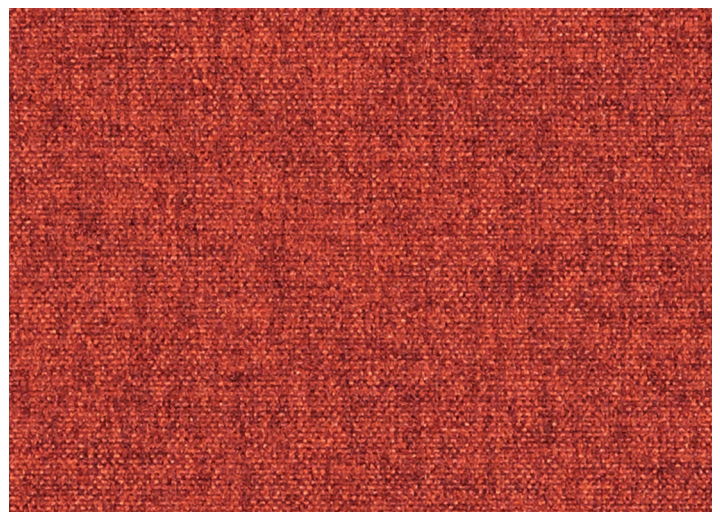
Dapper



Topaz



Aegean



Persimmon

Fadora

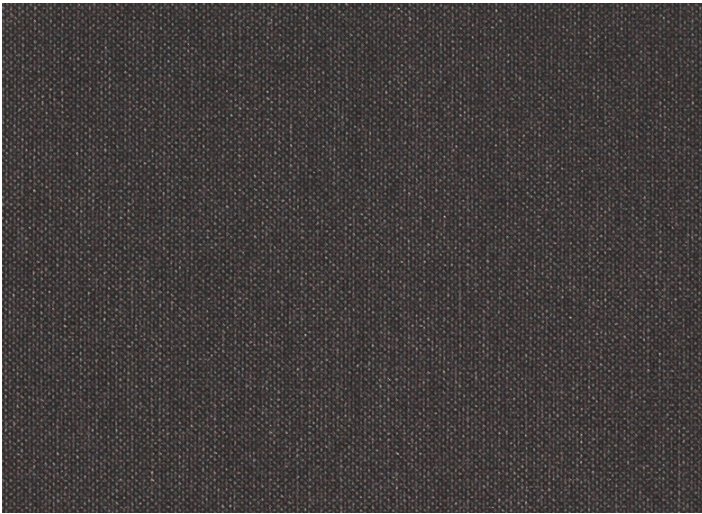
Specs and Cleaning

Category:	Upholstery & Panel
Content:	100% Polyester
Backing:	Polyester
Finish:	Stain Repellent - PFOA Free
Shown Railroaded:	NO
Directional:	Yes
Breaking Strength:	Warp 290/Fill 239
Seam Strength:	Warp: 106.1/Fill: 109.2
Abrasion Resistance:	Passes 100,000 Double Rubs (Wyzenbeek)
Pilling Resistance:	Class 5
Colorfastness to Crocking:	Dry: Class 4 min/Wet: Class 4 min
Colorfastness to Light:	40 hours
Application:	Indoor
Flammability:	Passes Cal TB 117-2013; NFPA 260/UFAC Class 1; ASTM E84 Class 1 or A

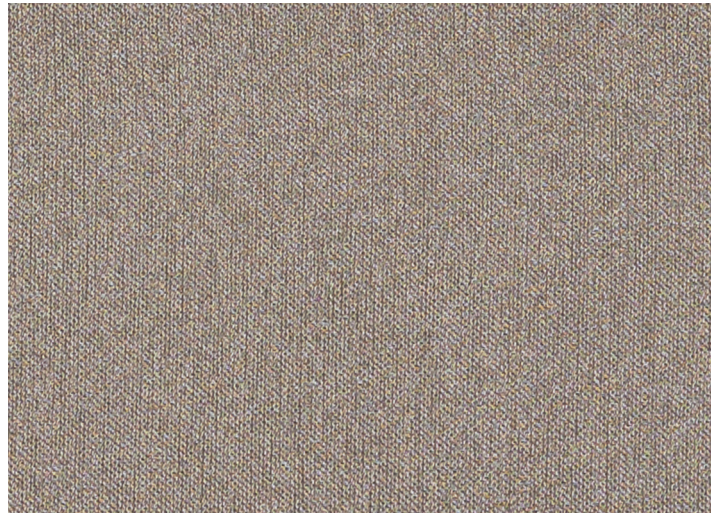
Cleaning Code: W: Water-Based Cleaner
W: Water-Based Cleaner - Spot clean, using the foam only from a water-based cleaning agent, such as a mild detergent or non-solvent upholstery shampoo product. Apply foam with a soft brush in a circular motion. Always rinse promptly with clean water. Vacuum when dry. Pretest small area before proceeding. Please note: If specific cleaners are not listed, then the pattern has not been tested for cleaning solution compatibility.

Silverweave - Coated Fabric

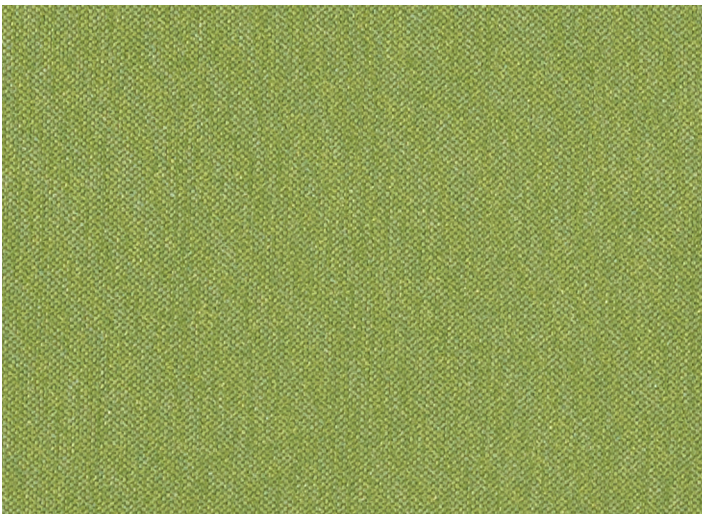
Colors



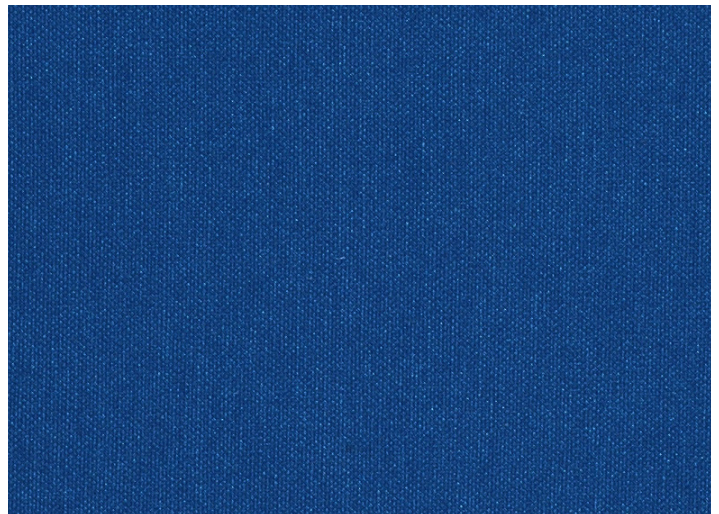
Mica



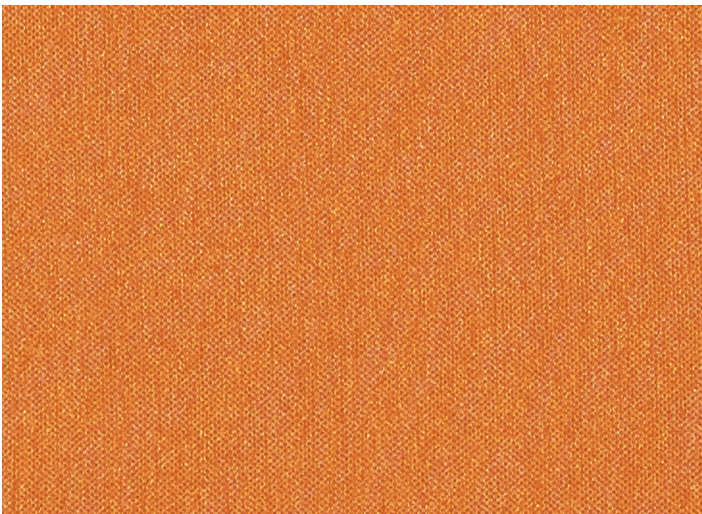
Cliff



Lime



Cobalt



Bittersweet



Cayenne

Silverweave

Specs and Cleaning

Category:	Upholstery
Content:	81% Vinyl face, 19% Polyester backing
Backing:	100% Polyester
Finish:	Soil and Stain Resistant Top Coat
Shown Railroaded:	NO
Directional:	Yes
Breaking Strength:	Warp 121/Fill 72
Seam Slippage:	Warp: 46/Fill: 35
Abrasion Resistance:	Passes 100,000 Double Rubs (Wyzenbeek)
Pilling Resistance:	NA
Colorfastness to Crocking:	Dry: Class 4 min/Wet: Class 4 min
Colorfastness to Light:	1000 hours
Application:	Indoor
Flammability:	Passes Cal TB 117-2013; NFPA 260/UFAC Class 1; AB 2998 Compliant

Cleaning Code:

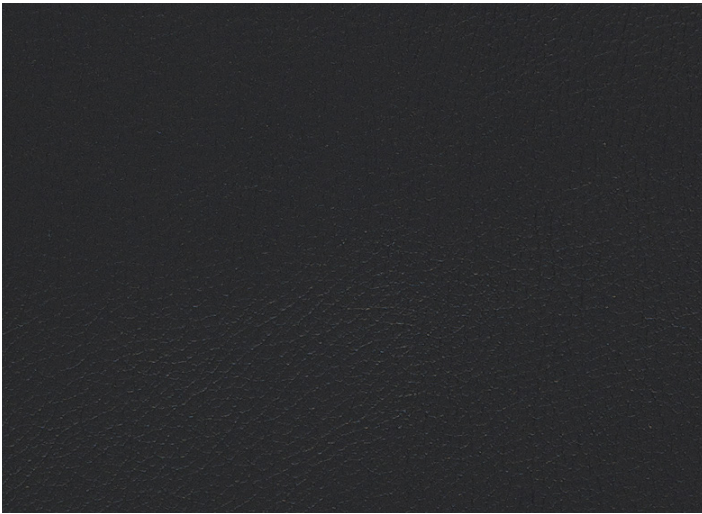
CFC: Coated Fabrics Cleaning, BC: Bleach Cleanable

Coated Fabrics Cleaning - When a spill/stain occurs wipe immediately with a clean dry cloth. Carefully remove the majority of the stain then follow the steps below. Soap & Water - Remove ordinary dirt and smudges with a mild soap and water solution using a soft cloth or towel. Rinse with fresh water and wipe dry. Non-abrasive Cleaners - If residue remains, use a straight application of the following cleaners: Fantastik or 409 and gently clean with a soft cloth. Rinse with fresh water and wipe dry. Isopropyl Alcohol - More stubborn stains may be eliminated using a cotton cloth soaked in 70-91% isopropyl (rubbing) alcohol. Wipe without spreading stain to surrounding area. A second application should be applied with vigorous rubbing in a circular motion. For highly textured material, a soft brush is recommended to clean valleys and crevices. Rinse with fresh water and wipe dry.

BC: Bleach Cleanable - 1 parts bleach, 9 parts water = 10% bleach, 90% water solution. Do not clean / disinfect fabric for longer than 10 minutes using the 10% bleach solution. Always rinse promptly with clean water after applying the bleach solution. Failure to do so will void any and all warranties.

Durango - Coated Fabric

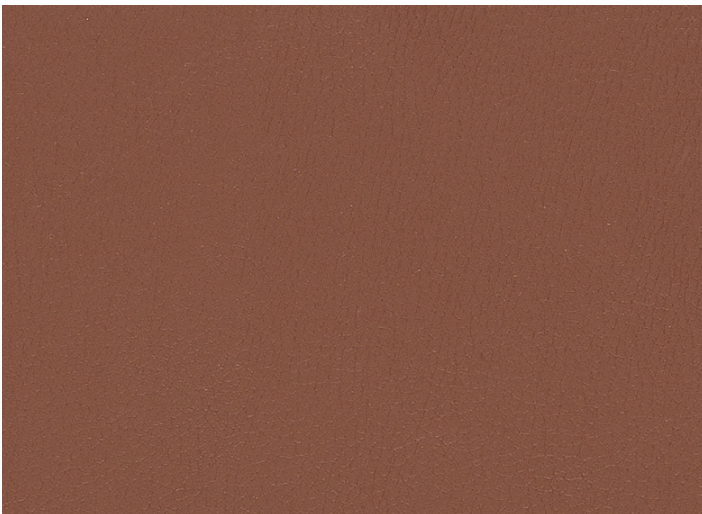
Colors



Black



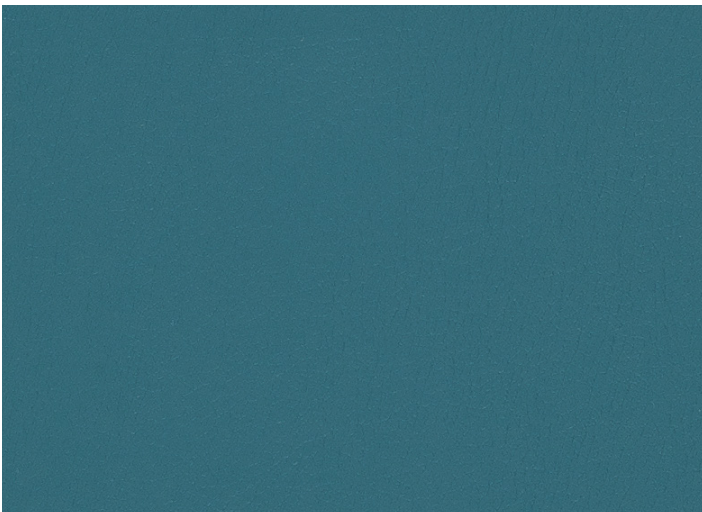
Sapphire



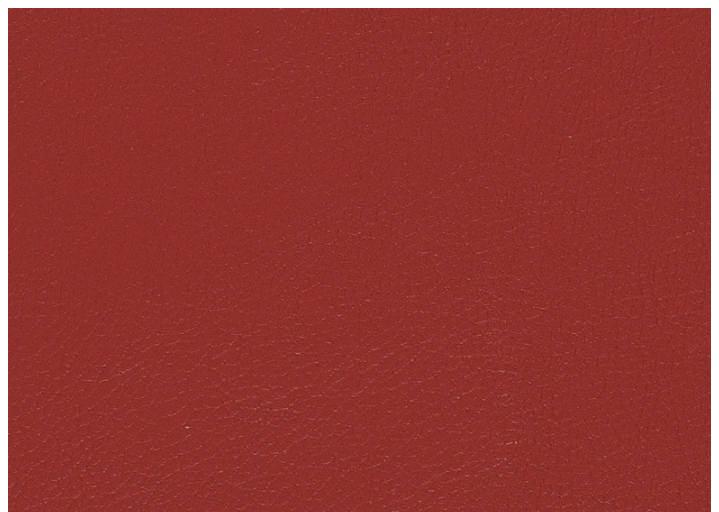
Bombay



Basil



Aegean



Paprika

Durango

Specs and Cleaning

Category:	Upholstery
Content:	78% Vinyl - Phthalate Free face, 22% Polyester backing
Backing:	100% Polyester
Finish:	Soil & Stain Resistant Top Coat with Ink Resistant Technology
Shown Railroaded:	NO
Directional:	NO
Breaking Strength:	Warp 167/Fill 97
Seam Strength:	NA
Abrasion Resistance:	Exceeds 1,000,000 Double Rubs (Wyzenbeek)
Pilling Resistance:	NA
Colorfastness to Crocking:	Dry: Class 4 min/Wet: Class 4 min
Colorfastness to Light:	650 hours
Application:	Indoor
Flammability:	Passes Cal TB 117-2013; NFPA 260/UFAC Class 1; AB 2998 Compliant

Cleaning Code:

WS: Water/Solvent Cleaner, **CFC:** Coated Fabrics Cleaning, **BC:** Bleach Cleanable

WS: Water/Solvent Cleaner - Spot clean with a mild solvent, an upholstery shampoo, or the foam from a mild detergent. When using a solvent or dry cleaning product, follow instructions carefully and clean only in a well-ventilated room. Avoid any product that contains carbon tetrachloride or other toxic materials. With either method, pretest a small area before proceeding. Always rinse promptly with clean water.

CFC: Coated Fabrics Cleaning - When a spill/stain occurs wipe immediately with a clean dry cloth. Carefully remove the majority of the stain then follow the steps below. **Soap & Water** - Remove ordinary dirt and smudges with a mild soap and water solution using a soft cloth or towel. Rinse with fresh water and wipe dry. **Non-abrasive Cleaners** - If residue remains, use a straight application of the following cleaners: Fantastik or 409 and gently clean with a soft cloth. Rinse with fresh water and wipe dry. **Isopropyl Alcohol** - More stubborn stains may be eliminated using a cotton cloth soaked in 70-91% isopropyl (rubbing) alcohol. Wipe without spreading stain to surrounding area. A second application should be applied with vigorous rubbing in a circular motion. For highly textured material, a soft brush is recommended to clean valleys and crevices. Rinse with fresh water and wipe dry.

BC: Bleach Cleanable - 1 parts bleach, 9 parts water = 10% bleach, 90% water solution. Do not clean / disinfect fabric for longer than 10 minutes using the 10% bleach solution. Always rinse promptly with clean water after applying the bleach solution. Failure to do so will void any and all warranties.