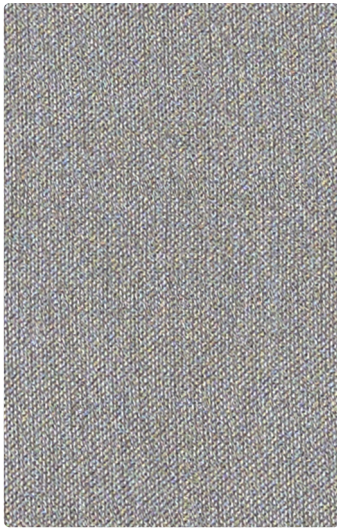




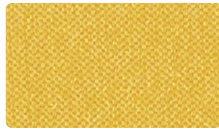
FABRIC GUIDE COATED FABRIC

AGATI

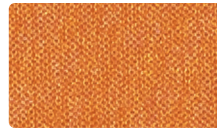
MAYER
FABRICS



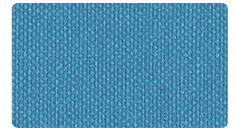
SILVERWEAVE
SW-026 Zinc



SW-012
Daylily



SW-039
Bittersweet



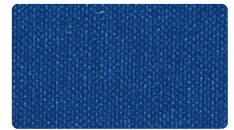
SW-034
Cyan



SW-053
Spring



SW-011
Poppy



SW-024
Cobalt



SW-017
Doe



SW-005
Eggplant



SW-020
Mica



MATKA
MT-067 Pebble



MT-020
Burnish



MT-020
Thistle



MT-023
Peacock



MT-013
Spring



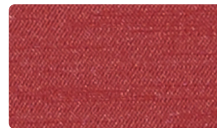
MT-005
Aubergine



MT-004
Lapis



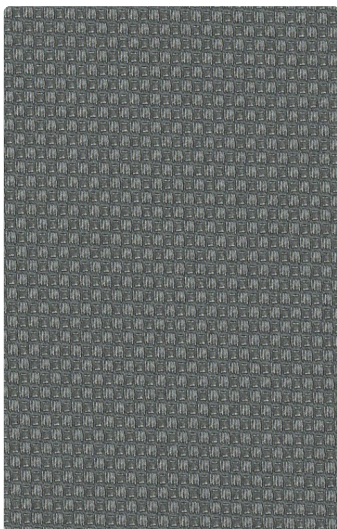
MT-012
Amber



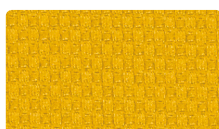
MT-001
Cherry



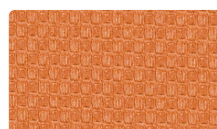
MT-006
Midnight



ETCH
EH-016 Charcoal



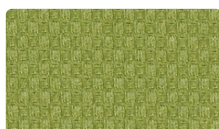
EH-002
Marigold



EH-009
Mango



EH-034
Crystal



EH-003
Lime



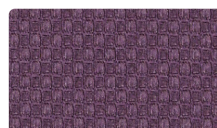
EH-001
Flame



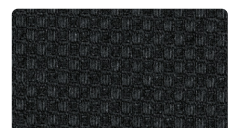
EH-014
Denim



EH-019
Penny



EH-005
Grape

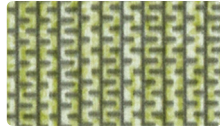


EH-006
Ebony

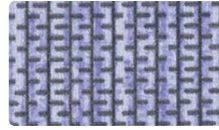
Additional colors are available. Please refer to the Mayer Fabrics website.



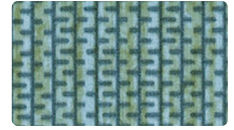
ZIP
ZP-016 Haze



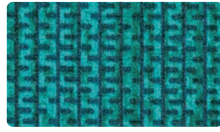
ZP-003
Spring



ZP-005
Lavendar



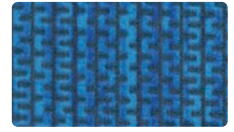
ZP-004
Sea



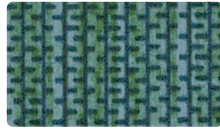
ZP-013
Peacock



ZP-001
Punch



ZP-034
Cobalt



ZP-023
Pine



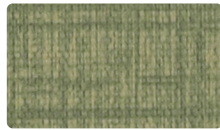
ZP-015
Aubergine



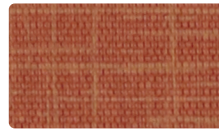
ZP-036
Coal



SKETCH
SC-026 Cobblestone



SC-013
Basil



SC-009
Tangerine



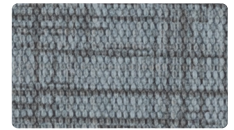
SC-036
Glacier



SC-043
Cyprus



SC-001
Poppy



SC-034
Rain



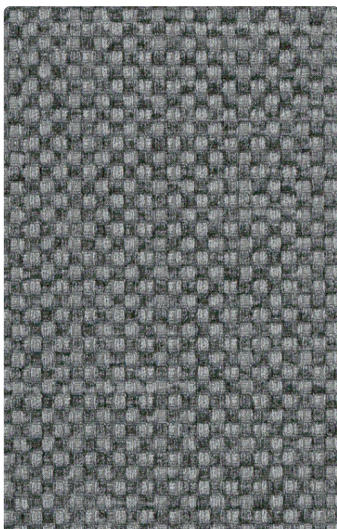
SC-006
Charcoal



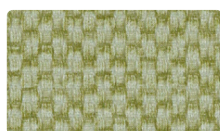
SC-005
Violet



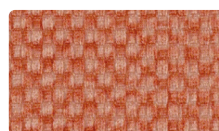
SC-013
Royal



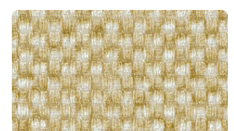
MODE
MO-006 Pewter



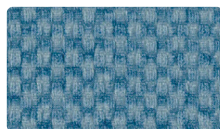
MO-003
Celery



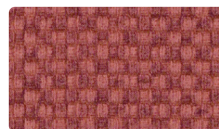
MO-011
Paprika



MO-017
Flax



MO-024
Denim



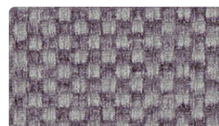
MO-001
Persimmon



MO-002
Straw



MO-044
Spruce



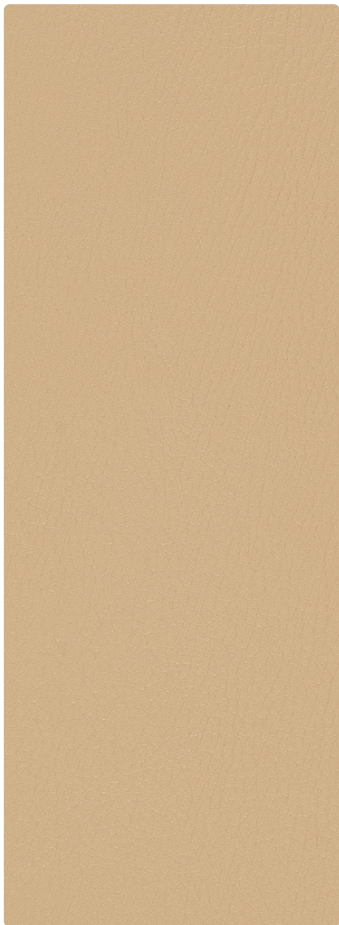
MO-005
Orchid



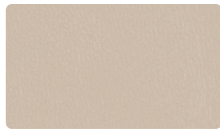
MO-010
Mocha



SPARTAN
SN-000 Taupe



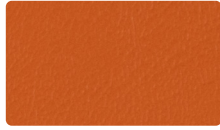
DURANGO
DU-007 Natural



SN-047
Doe



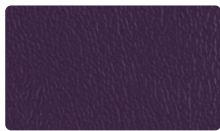
SN-002
Lemon



SN-009
Tangerine



SN-001
Lipstick



SN-008
Grape



DU-002
Chamois



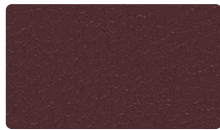
DU-019
Sepia



DU-009
Tangelo



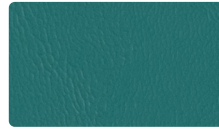
DU-001
Paprika



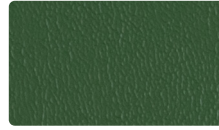
DU-008
Merlot



SN-014
Caribbean



SN-003
Reef



SN-013
Parsley



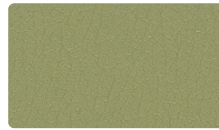
SN-034
Cobalt



SN-044
Deep Sea



DU-014
Cyan



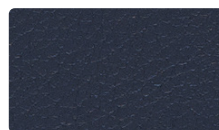
DU-023
Jade



DU-024
Aegean



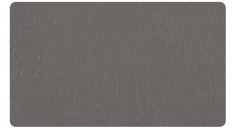
DU-033
Calypso



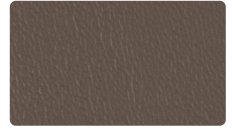
DU-004
Sapphire



SN-016
Flint



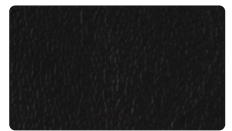
SN-036
Quarry



SN-030
Branch



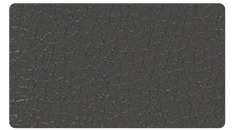
SN-046
Granite



SN-056
Black



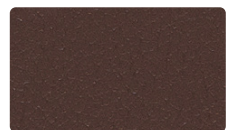
DU-017
Alabaster



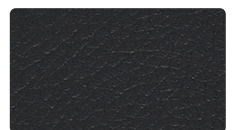
DU-016
Char



DU-010
Bombay



DU-000
Cocoa



DU-006
Black

Additional colors are available. Please refer to the Mayer Fabrics website.

TECHNICAL INFORMATION

Pattern 54"	Content and Backing	Certifications	Weight/ Linear Yd.	Pattern Repeat	Finish	Abrasion Wyzenbeek	Light- Fastness	Flammability	Cleaning Code
DURANGO™	78% Vinyl - Phthalate Free face, 22% Polyester backing	GREENGUARD Gold	30 oz.	None	Soil & Stain Resistant Top Coat with Ink Resistant Technology	1,000,000 [^] Double Rubs	650 hours	Cal. 117-2013 NFPA 260/UFAC Class 1 BIFMA	BC, CFC
ETCH <i>Directional</i>	78% Vinyl - Phthalate Free face, 22% Polyester backing	GREENGUARD Gold	30 oz.	None	Soil & Stain Resistant Top Coat with Ink Resistant Technology	100,000 [^] Double Rubs	300 hours	Cal. 117-2013 NFPA 260/UFAC Class 1 FMVSS 302	WS, BC, CFC
MATKA <i>Directional</i>	80% Vinyl - Phthalate Free face, 20% Polyester backing	GREENGUARD Gold	30 oz.	Non- Matching	Soil & Stain Resistant Top Coat with Ink Resistant Technology	250,000 [^] Double Rubs	500 hours	Cal. 117-2013 NFPA 260/UFAC Class 1	WS, BC, CFC
MODE <i>Directional</i>	81% Vinyl - Phthalate Free face, 19% Polyester backing	GREENGUARD Gold	30 oz.	Non- Matching	Soil & Stain Resistant Top Coat	100,000 [^] Double Rubs	1000 hours	Cal. 117-2013 NFPA 260/UFAC Class 1	BC, CFC
SILVERWEAVE <i>Directional</i>	81% Vinyl face, 19% HPolyester backing	GREENGUARD Gold	30 oz.	None	Soil & Stain Resistant Top Coat	930,000 [^] Double Rubs	1000 hours	Cal. 117-2013 NFPA 260/UFAC Class 1	BC, CFC
SKETCH <i>Directional</i>	65% Vinyl - Phthalate Free face, 35% Polyester backing	GREENGUARD Gold	32 oz.	Non- Matching	Soil & Stain Resistant Top Coat with Ink Resistant Technology	1,150,000 [^] Double Rubs	500 hours	Cal. 117-2013 NFPA 260/UFAC Class 1 FMVSS 302	WS, BC, CFC
SPARTAN <i>Indoor/Outdoor</i>	80% Vinyl - Phthalate Free face, 20% Polyester backing	GREENGUARD Gold	32 oz.	None	Soil & Stain Resistant Top Coat	175,000 [^] Double Rubs	1000 hours	Cal. 117-2013 NFPA 260/UFAC Class 1 FMVSS 302	WS, BC, CFC
ZIP <i>Directional</i>	78% Vinyl - Phthalate Free face, 22% Polyester backing	GREENGUARD Gold	26 oz.	None	Soil & Stain Resistant Top Coat	100,000 [^] Double Rubs	1000 hours	Cal. 117-2013 NFPA 260/UFAC Class 1	BC, CFC

REDUCED ENVIRONMENTAL IMPACT

These products are GREENGUARD Gold Certified for low chemical and particle emissions to UL standard UL 2818 and may contribute to LEED certification.

No FR Additives PFAS Free

CARE AND CLEANING INFORMATION

WS: Water/Solvent Cleaner CFC: Coated Fabrics Cleaning – Refer to Mayer website for complete cleaning info.

BC: Bleach Cleanable – 1 part bleach, 9 parts water = 10% bleach, 90% water solution. Do not clean/disinfect fabric for longer than 10 minutes using the 10% bleach solution. Always rinse promptly with clean water after applying the bleach solution. Failure to do so will void any and all warranties.

DYE TRANSFER DISCLAIMER

Certain clothing and accessory dyes (such as those used on denim jeans) may migrate to lighter colors. This phenomenon is increased by humidity and temperature and is irreversible. Mayer Fabrics will not assume responsibility for dye transfer caused by external contaminants. Please check compatibility when using this product in combination with painted or varnished surfaces.

ADDITIONAL INFORMATION

[^]Abrasion test results exceeding ACT Performance Guidelines are not an indicator of product lifespan.

Multiple factors affect fabric durability and appearance retention.

Warranty: Please refer to the Mayer website for warranty information by pattern.

Custom Colors: All patterns can be custom colored. Minimum yardage applies.

Digital Swatch Card Color Matching: Due to color variations on different monitors and color printers, actual swatch colors may vary slightly. Please request a memo sample from Mayer Fabrics to ensure proper color representation.

Complete and current product information available at mayerfabrics.com.



These fabrics meet or exceed these ACT performance guidelines.
*Certification Marks owned by ACT®

©2023
AFGCD IMF026

AGATI

MAYER FABRICS

T 312.829.1977 www.agati.com
451 North Claremont, Chicago, IL 60612

T 800.428.4415 mayerfabrics.com
500 S. Kitley Ave. Indianapolis, IN 46219